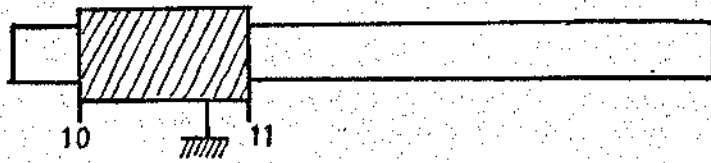


"FERRYTRON-Export"



	f	OSC.	Acc.
O.C.1	6,1	BOB.	BOB.
SW1	16 Mc/s	Tr. C.V.	
P.O.	574	BOB.	CADRE
MW	1400 kc/s	C1	Tr. C.V.
O.C.	3,25	BOB.	BOB.
SW2	5,5 Mc/s	C2	

F Osc. > F Acc.
MF = 480 Kc/s

